



EphA3/4/5 (phospho Tyr779/833) Polyclonal Antibody

Catalog No	YP-Ab-13072
Isotype	IgG
Reactivity	Human;Mouse;Rat
Applications	IHC;IF;ELISA
Gene Name	EPHA3/EPHA4/EPHA5
Protein Name	Ephrin type-A receptor 3/4/5
Immunogen	The antiserum was produced against synthesized peptide derived from human EPHA3/4/5 around the phosphorylation site of Tyr779/833. AA range:746-795
Specificity	Phospho-EphA3/4/5 (Y779/833) Polyclonal Antibody detects endogenous levels of EphA3/4/5 protein only when phosphorylated at Y779/833.
Formulation	Liquid in PBS containing 50% glycerol, 0.5% BSA and 0.02% sodium azide.
Source	Polyclonal, Rabbit,IgG
Purification	The antibody was affinity-purified from rabbit antiserum by affinity-chromatography using epitope-specific immunogen.
Dilution	IHC: 1/100 - 1/300. ELISA: 1/10000.. IF 1:50-200
Concentration	1 mg/ml
Purity	≥90%
Storage Stability	-20°C/1 year
Synonyms	EPHA3; ETK; ETK1; HEK; TYRO4; Ephrin type-A receptor 3; EPH-like kinase 4; EK4; hEK4; HEK; Human embryo kinase; Tyrosine-protein kinase TYRO4; Tyrosine-protein kinase receptor ETK1; Eph-like tyrosine kinase 1; EPHA4; HEK8; SEK; TYRO1; Ephri
Observed Band	110kD
Cell Pathway	[Isoform 1]: Cell membrane ; Single-pass type I membrane protein .; [Isoform 2]: Secreted .
Tissue Specificity	Widely expressed. Highest level in placenta.
Function	catalytic activity:ATP + a [protein]-L-tyrosine = ADP + a [protein]-L-tyrosine phosphate.,disease:Defects in EPHA3 may be a cause of colorectal cancer (CRC) [MIM:114500].,function:Receptor for members of the ephrin-A family. Binds to ephrin-A2, -A3, -A4 and -A5. Could play a role in lymphoid function.,similarity:Belongs to the protein kinase superfamily. Tyr protein kinase family.,similarity:Belongs to the protein kinase superfamily. Tyr protein kinase family. Ephrin receptor subfamily.,similarity:Contains 1 protein kinase domain.,similarity:Contains 1 SAM (sterile alpha motif) domain.,similarity:Contains 2 fibronectin type-III domains.,tissue specificity:Widely expressed. Highest level in placenta.,



Background

This gene belongs to the ephrin receptor subfamily of the protein-tyrosine kinase family. EPH and EPH-related receptors have been implicated in mediating developmental events, particularly in the nervous system. Receptors in the EPH subfamily typically have a single kinase domain and an extracellular region containing a Cys-rich domain and 2 fibronectin type III repeats. The ephrin receptors are divided into 2 groups based on the similarity of their extracellular domain sequences and their affinities for binding ephrin-A and ephrin-B ligands. This gene encodes a protein that binds ephrin-A ligands. Two alternatively spliced transcript variants have been described for this gene. [provided by RefSeq, Jul 2008],

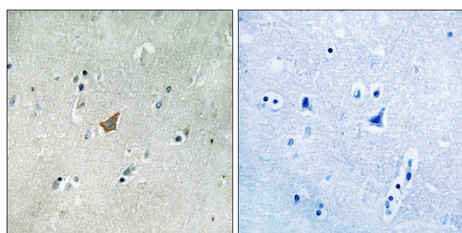
matters needing attention

Avoid repeated freezing and thawing!

Usage suggestions

This product can be used in immunological reaction related experiments. For more information, please consult technical personnel.

Products Images



Immunohistochemistry analysis of paraffin-embedded human brain, using EPHA3/4/5 (Phospho-Tyr779/833) Antibody. The picture on the right is blocked with the phospho peptide.